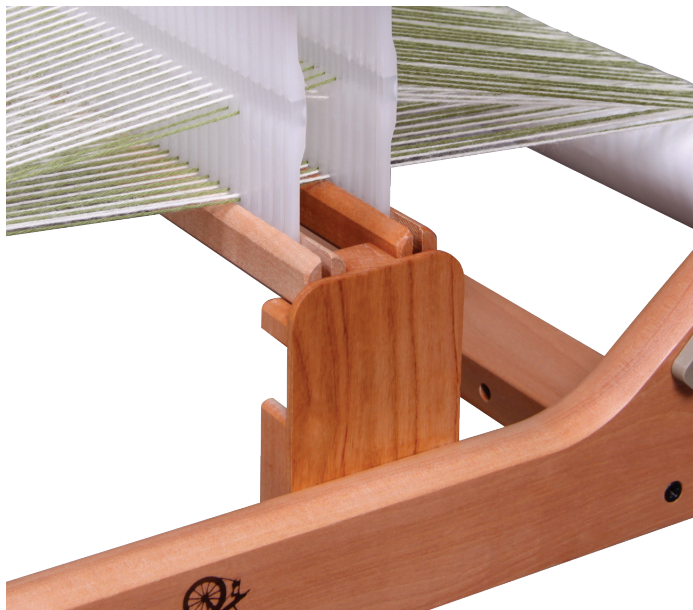


RIGID HEDDLE SECOND HEDDLE KIT

Assembly and Double Weave Instructions



RH2HK19052015V3

Tools Required



Assembly

Remove the existing heddle support blocks and replace with the new blocks into the same pilot holes.

Note: The loom can still be attached to a loom stand through the holes in the loom side.

You will also need an extra heddle (reed) with the same DPI as the one you already have.

Ashford Handicrafts Limited

Factory and Showroom: 415 West Street, PO Box 474, Ashburton 7700 New Zealand
Telephone 64 3 308 9087 Facsimile 64 3 308 8664
Email: sales@ashford.co.nz Internet: www.ashford.co.nz

Ashford Guarantee

Thank you for purchasing this Ashford product. In the unlikely event there is any fault in manufacture we will replace the item. To validate our guarantee please visit our website or write to us.

Create this beautiful double weave shuttle holder on a Rigid Heddle Loom with the second heddle kit.

Double Weave and Brooks Bouquet on the Rigid Heddle Loom

This project has been woven on a 40cm (16ins) Rigid Heddle Loom but can be adapted to any Rigid Heddle or Knitters Loom.

Materials used

Loom: Rigid Heddle Loom 40cm (16")

Reed: 2 x 30/10cm (7.5dpi)

Warp & Weft Yarns:

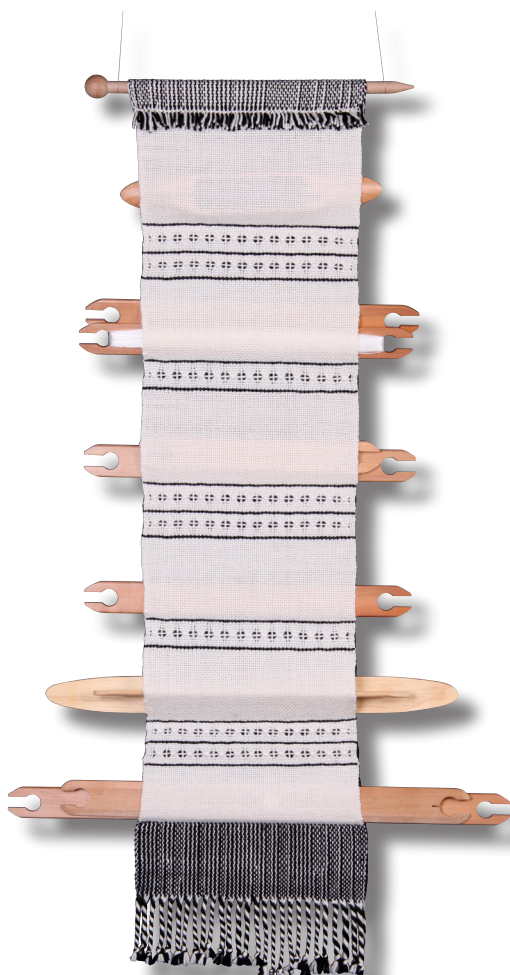
Ashford McKenzie 4 ply
(100% Merino; 385m/421yds; 100gms net)

White 1 ball, Moss 1 ball

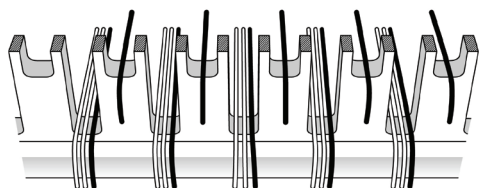
Other: Two pick-up sticks (or shuttles)

Warping

1. Place one reed in the back heddle rest position.
2. Excluding the first three and last four slots, warp across reed in the normal way but place two loops in each slot (one loop of moss and one of white).
3. Wind the warp onto the back roller and cut the loops.



4. With the front of the loom facing you and starting from the left use a heddle hook to take one of the moss ends from the slot and thread it through the eye to the right. Continue across the reed.



5. Place the reed in the rest position.



6. Place the second reed in the front heddle down position.

7. Drape all ends from the back reed over the front reed (this will help to make the threading easier).



8. Take the first group of 4 ends (2 white ends and 1 moss end from the slot and 1 end from the eye to the right and thread all 4 ends through the slot directly in front in the front reed.



9. Continue across the reed. Now you will have 4 ends (2 moss and 2 white) in each slot in the front reed.



10. Place both reeds in the rest position.

11. Take the first group of 4 ends and pull the green pair down and the white pair up.

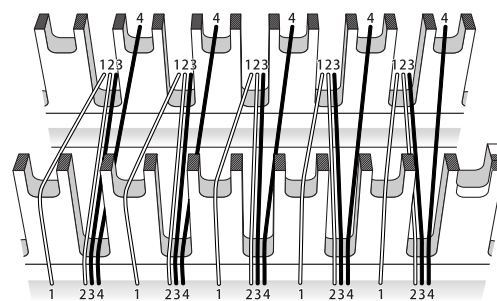


12. Take 1 white end from the pair of white ends (choose the one that is to the top or left of the pair) and thread through the eye to the left.



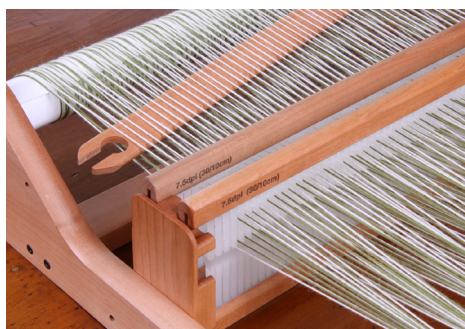
13. Continue across the reed.

14. Check there are no crosses between the reeds. If the ends are crossed remove and repeat step 11 and 12. Your threading will look like diagram below.



15. Tie to the front warp stick.

Creating the additional sheds



Pick Up Stick A

1. Place both reeds in down position. Behind the back reed lift up all the white threads on the top and insert a pick up stick (A).
2. Slide the pick up stick A to the back beam.



Pick Up Stick B

1. Place both reeds in the up position. Slide Pick up stick A forward and insert pick up stick B into the bottom shed that is formed.
2. Slide both pick up sticks to the back beam.

Plain weaving - one layer double the ends per cm/in.

Hint: When changing the shed leave the front reed hanging.

1. Place both reeds in up position, weave one pick.
2. Place both reeds in the down position, weave one pick.
Repeat step 1.



Two Layered Weaving

- It is easy to create two separate layers of cloth at the same time.

Top Layer

The top layer is white warp and weft.

1. With both reeds in the rest position, slide pick up stick A forward and turn on side to create shed 1 of the top layer.
2. Weave one pick of white. Slide pick up stick A to the back.
3. Create shed 2 of the top layer with front reed up.
4. Weave one pick of white.

Bottom layer

The bottom layer is moss warp and weft.

1. With both reeds in the rest position, slide pick up stick B forward and turn on side to create shed 1 of bottom layer.
2. Weave one pick of moss. Slide pick up stick B to the back.
3. Create shed 2 of bottom layer with back reed down.
4. Weave one pick of moss.

Repeat weaving one top layer one bottom layer until weaving reaches the desired length.

To join the layers at anytime place the back reed up and weave one pick of either moss or white.

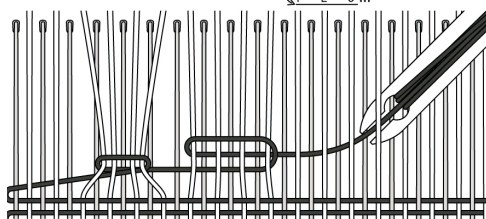
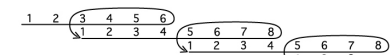


Hint: When weaving two separate layers do not go around the alternate weft thread.

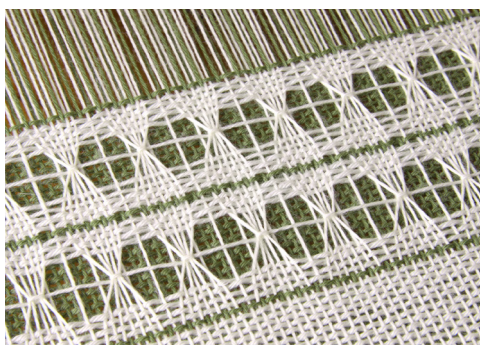
Brooks Bouquet

- The beautiful lace of Brooks Bouquet is enhanced by the moss second layer backing cloth.

1. Weave 4 picks on the bottom green layer and four picks top white layer (see instructions above).
2. Weave 4 more picks on the bottom moss layer.
3. Place both reeds in the rest position and slide pick up stick A forward and turn on side.
4. Slide the shuttle with the white yarn under the first 6 ends and back over and around the last 4 ends and pull the yarn to make a “bunch”.
5. Pick up the next 4 ends with the shuttle and take it back over and around these 4 ends and under the next 4 (you will be going under 8 ends).



6. Continue across row (check that the number of ends will make equal-sized bunches).
7. When there are 6 ends left use the shuttle to pick up 4 ends and take the shuttle around the 4 and under the 2 ends to finish the row.
8. Weave 4 more picks bottom and top layers.
9. Join the two layers (see above).
10. Repeat instructions 1-9 for desired result.



Hint: Use your fingers to adjust the “bouquets” so they are level.

To make a Shuttle holder wall hanging weave sections as in diagram below: Secure top end with hemstitch or machine zigzag stitch. Do a twisted fringe at the beginning of the weaving,



which will become the bottom of the hanging. Handwash in warm water. Lay flat to dry. Fold top over 3cm (1½ins) stitch down to make pocket to insert hanging needle.

Double weave shuttle holder

